



Labs



HoTEL Holistic Approach to
Technology Enhanced Learning

Hosting Innovators, Rooms for Success.

Basic Infos
Autumn 2013

The HoTEL Vision about Innovation in TEL

HoTEL (Holistic Approach to Technology Enhanced Learning) is a Support action of the 7th Framework Programme which aims to design, develop and test an "Innovation Support Model" in the area of Technology Enhanced Learning (TEL), to enhance the speed and quality of innovation in TEL in Europe.

We believe that Innovation, particularly in the field of TEL, may take very different forms than the classic paradigm that moves from research through prototypes to massive commercial exploitation. In the field of TEL, innovation may frequently start in a classroom or in a community of practice, or may be the result of massive use of a technology not born for educational purpose. This means that any "innovation support model" must fit into the variety of modes and contexts in which innovation may emerge and have different, adaptable ways to support it.

The road to success for a TEL innovation depends, to a large extent, on the possibility to be understood and supported by some categories of stakeholders that are not always the same (e.g. industrial investors, school leaders, publishers, policy makers, teachers' networks, student associations, consultants...).

Furthermore, what appears a big success in a certain context may not work at all in another context (country, socio-economic environment, organization, sector). It is therefore fundamental to identify not only "what works" but also "where" and "under which conditions", distinguishing between success factors that are relatively "unique", specific to the context, and others that can more easily be found or reproduced in other contexts.

The HoTEL Innovation Support Model and the Exploratorium Labs

The HoTEL Innovation support model will be designed and tested within three "Labs" – the HoTEL Learning Exploratorium Labs. The Labs represent the key concept of the project in terms of multiplying potential. The Labs will support adaptation of an innovation to a specific field and support scalability of innovations (from small to large scale). The Labs will act in three innovation-friendly learning environments: higher education, corporate learning and informal learning within professional networks.

These Labs will cooperate among each other, ensuring at the same time independent agendas so to address the specific needs of the sector addressed. Each lab will work in synergy but independently from others and will be shaped according to the specific needs of the sector addressed.

For each Lab, a set of 10 innovators will be selected, both from an initial project wide Open call for TEL innovators (see <http://hotel-project.eu/opencall>) and from further cases identified directly by each Lab.

TEL Innovators, such as researchers and practitioners, will have the chance to share and discuss their innovations and possibly to test them within the Labs between 2013 and 2014.

Through the exploratory activities of HoTEL, new ways of using ICT for learning will be investigated, analysed and tested and their potential will be discussed and assessed.

Introducing the HoTEL project

To learn more about
the project please go to
<http://HoTEL-project.eu>

ICT innovation for better learning and teaching at the University

UNIR
Higher Education

What is this Lab about?

UNIR 'Higher Education' Exploratorium Lab is designed around the concept of Information and Communication Technologies innovations, applied for the enhancement of learning and teaching processes and practices in a Higher Education university environment.

The Lab is focused on the entire University community, involving students, academic team, and administrative staff. The innovations selected through HoTEL's Open Call for innovators to be piloted in this lab will provide a significant improvement on one or many of these stakeholders, with a special focus on Information and Communication Technology assets which support methodologies and strategies for better learning and teaching. UNIR Higher Education Exploratorium Lab will work with real users who will test the innovations in a real context, exploring how their effective adoption can be assured and supported in this context, through the "Innovation Support Model" application.

To achieve these goals, the Lab will support innovations based on the following theoretical approach:

- Behaviourism, since we take user behaviour and user interaction to support the educational methodology, so that we can feedback the user after further analysis
- Social-constructivism, since the user becomes the key factor for his/her own learning, while making social interaction and team work in the classroom and outside
- Adaptation theories, since we provide personalised support to students and teachers to improve their performance
- Self-regulated, since the user takes over the final decision about his/her learning itinerary and the activities to do
- Social exchange, since we take trust, reputation and interaction, as key element to foster social activity in informal contexts, leading to self-regulated learning/ teaching
- Personal Learning Environment, since the Virtual Campus concentrates the major activity of this online university population
- Open Educational Resources, since we make use of as much information and knowledge over the Internet, integrated into formal units of learning
- Learner and teacher centred, since the users are the real motto of the university and the very basic academic, research, and support unit
- Non-formal learning, since we combine formal and non-formal methodologies and sub-settings to support online learning in an open, and multi-input setting

UNIR Higher Education Exploratorium Lab provides a unique setting for the implementation and exploitation of innovations.

UNIR (International University of La Rioja) is an online university based on an innovative virtual model of higher education, which leans on a personalized, pro-active, and collaborative distance learning method of instruction, comprising an academic community of over 300 lecturers, 400 multidisciplinary professionals, and more than 9000 students. In this setting, the master line of UNIR Higher Education Exploratorium Lab is to encourage users to interact, collaborate and contribute with others, so that they develop competences and achieve valuable knowledge thanks to a fine-tuned methodology for learning and teaching.

What type of technology will be used at the Lab to support innovation?

UNIR Higher Education Exploratorium Lab will support the innovations to be implemented through the following technologies, together with an extensive expertise on research outcomes exploitation and time-to-market strategies.

- Mobiles
- Collaboration environments, games, social networks
- Learning analytics, Personalisation, Personal Learning Environnements
- Cloud computing, augmented reality, ubiquity
- Online communication tools, virtual worlds
- Massive Open Online Courses

What type of TEL related innovations will be implemented?

UNIR Higher Education Exploratorium Lab will select those innovations that represent an original and significant approach to support online virtual learning and teaching, focused on the following areas:

- Informal learning, engaged (Informal and formal learning in a combined methodology)
- Virtual Labs (Live, online technology labs where students and teachers interact in real time)
- Personalised learning (Adaptive learning itineraries for students)
- Adaptive teaching (Semi-automatic support for teachers, based on learning analytics, Technology-enhanced learning and recommendation Systems)

Who benefits from the innovation... is interested, affected or influenced?

UNIR Higher Education Exploratorium Lab will implement innovations in the real University context, which comprises the following specific stakeholders:

- **Students** (Learners of undergraduate and graduate academic programmes)
- **Teachers** (Lecturers of academic programmes; Academic coordinators; Director of academic programme)
- **Tutors** (Support academic staff for lecturers; liaison with students)
- **Technical coordinators** (Support administrative staff for administrative processes; liaison between academic coordinator and lecturers)
- **Researchers** (Combined role with teachers, usually, working on specific fields related or not to Technology-enhanced learning)

Means to engage at the Higher Education Exploratorium Lab

UNIR Higher Education Exploratorium Lab will provide a unique possibility to innovate with real users, testing ICT innovations adoption, in a real Higher Education context. The integrated vision and experience of all the involved stakeholders, together with the feedback and advice of other universities and sector experts, will provide all the support required for the innovations to be effectively implemented in this particular educative setting.

UNIR "Higher Education Lab" Key Dates

September 2013

Selection and assessment process of innovations to be piloted in UNIR Higher Education Exploratorium Lab

Mid- September 2013

Initial design and implementation of innovations at the Higher Education setting

26th of September 2013

"UNIR Higher Education Exploratorium Lab launching workshop", organized together with the launching of EFQUEL Exploratorium Lab on informal learning and professional networks.

This launching session will be the presentation of the Lab and the innovations finally selected from the HoTEL Open Call for Innovators, to be piloted in it during the following months.

February 2014

First assessment on the implementation of innovations, partial feedback, and fine-tuning, semester 1

July 2014

Second assessment of the implementation of innovations, final feedback and best practices, semester 2



Implementing TEL innovations in professional networks to make effective informal knowledge transfer and capacity building a reality.

EFQUEL Informal learning and professional networks

What is this Lab about?

The Lab on 'Informal learning and professional networks' will be built around an existing professional network within the TEL community. This Lab will explore and test how the adoption of an informal TEL innovation in a professional network can be enhanced and in what way a network of professionals will evolve and learn, both on an individual level as on a network level, using TEL methods. Potential accelerators for adopting the innovations will be piloted during the process and evaluated. More specifically the innovations will be implemented using the 'Innovation Support Model' developed within the scope of the HoTEL project.

The lab will work according to the following logic

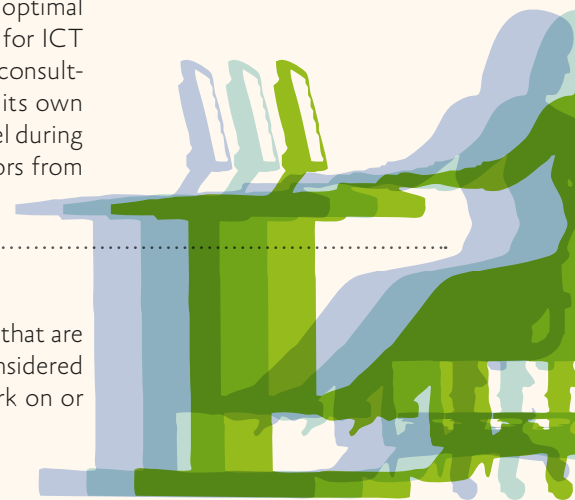
1. A discovery phase: An innovation is submitted to our review process and described in a structured format so that different innovations can be compared with each other. In particular, its' potential in assisting learning processes will be considered.
2. An analysis phase: The innovation will be analysed by a multi-stakeholder panel. Categories of analysis will include:
 - relative advantage: how is it better than existing approaches in terms of potential for learning?
 - efficiency: is the innovation advantageous from a cost vs advantage perspective?
 - complexity: how difficult is it to explain and implement the innovation within the context of current pedagogical norms?
 - startup difficulty: how difficult is it to introduce the innovation in a system from scratch?
 - scalability: how easy is it to mainstream the innovation across educational systems?
3. A transfer and support phase: Using the analysis from the stakeholder panel above, the lab will identify areas in which the innovation needs to improve its value proposition. The lab will support the innovators in terms of methodology, and submit the innovation to a second assessment after a few months to measure its progress in preparation for making it available for large-scale deployment.

EFQUEL, as a network of organisations and individuals will function as a real life test environment for the implementation of three TEL innovations to encourage informal learning within a professional network. The innovations will be targeting different existing subgroups of the network (stakeholder communities), involving actors around selected themes, with specific roles or with different interests, thus reaching an optimal level of stakeholders. Following the analysis of the results of HoTEL's open call for ICT innovators and an internal brainstorming phase consisting of internal community consultations, EFQUEL will select and test 3 emerging innovative TEL methods within its own network. 7 other informal learning innovations will be tested on a conceptual level during workshops and other knowledge exchange opportunities involving different actors from within and outside the network.

The test environment

Within EFQUEL, there are different stakeholder communities and target groups that are invited to participate in one or more experiments. These target groups can be considered as "professional networks" of their own because of the specific theme they work on or their common interest under the umbrella of the overall EFQUEL network.

- **EFQUEL members represented by EFQUEL core management group.**
For this group we intend to test a learning innovation which generates stronger membership involvement, generate ideas, solutions, or facilitate decision making within the overall TEL professional network, which will be benefiting the entire quality in TEL stakeholders.



- **Network of Quality Professionals:** The network is designed as a growing community of EFQUEL-related professionals who can contribute to EFQUEL activities. The network dedicates itself to becoming a body to establish the principles of professionalism and professional standards in the field of quality for Technology Enhanced Learning. For this group we aim to select a learning innovation that facilitates the development of a common understanding of these principles.
- **Reviewers pool:** reviewers are involved in UNIQUe (Technology Enhanced Learning Quality Label for Universities and HE Institutions – <http://unique.efquel.org/>) and ECBCheck (Quality review & certification for e-Learning Programmes – <http://ecbcheck.efquel.org/>) reviews and form as such a pool of key experts in the field of quality in TEL. Some of them are less experienced than others and could benefit from peer learning activities. Hence we aim to focus on a learning innovation that facilitates the exchange of reviewers expertise and knowledge about quality in TEL, which could be taken to a broader community in a second stage, willing to learn about quality models and certificates.

Supportive technologies

The Lab will choose those specific technologies that are most suited to support the selected innovations within the network environment.

Giving the overall scope the Lab has a special interest for:

- Collaboration environments
- Social networks
- Online Communication tools
- Cloud computing

What is in it for you?

The Lab offers an opportunity for several projects/companies developing informal TEL innovations contributing towards the transformation of a professional network into an effective community of practice. The implementation of the selected innovations will be tested in the Lab environment using HoTEL's 'Innovation Support Model'.

On the other hand the Lab set-up and results will give all those involved in professional networks the opportunity to gain a good insight in the enhancement and acceleration of the implementation of TEL innovations in this specific network context. During the Lab experiment we therefore aim to reach not only EFQUEL members but also fellow networks/ professional bodies and institutions in the field of TEL to get their critical view and recommendations on the activities and outcomes of the Lab.

EFQUEL “Informal learning and professional networks Lab” Key Dates

Early September 2013

selection of 10 innovations which will be explored by the TEL community in the EFQUEL professional network.

Half September 2013

design of an implementation strategy and identification of core partners for each test group.

26th of September 2013

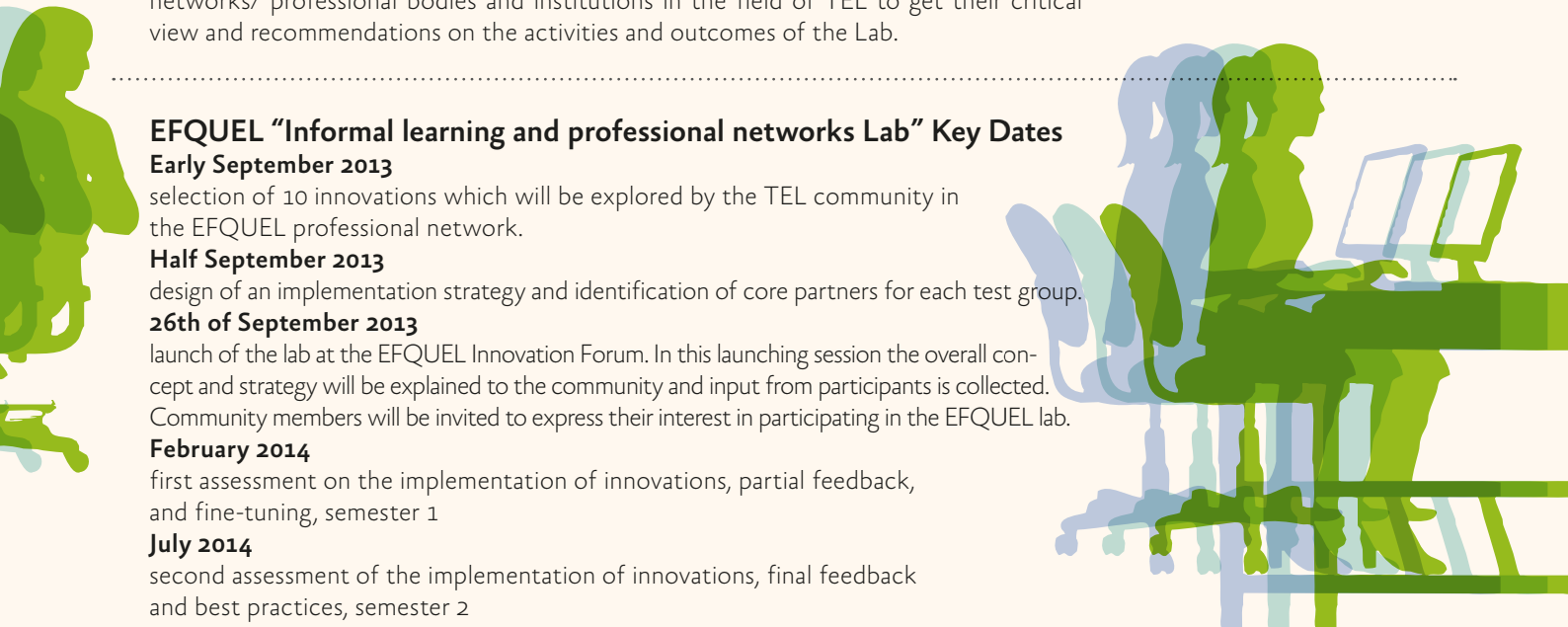
launch of the lab at the EFQUEL Innovation Forum. In this launching session the overall concept and strategy will be explained to the community and input from participants is collected. Community members will be invited to express their interest in participating in the EFQUEL lab.

February 2014

first assessment on the implementation of innovations, partial feedback, and fine-tuning, semester 1

July 2014

second assessment of the implementation of innovations, final feedback and best practices, semester 2



How can existing TEL innovation help us to teach how to innovate in TEL?

ELIG
Learning@Work

The ELIG ‘Learning@Work’ Lab

The principle question that the ELIG ‘Learning@Work’ Lab is tangling is: How can existing TEL innovation help us to teach how to innovate in TEL? With this question in mind the ‘Learning@Work Lab’ has two parallel running and inter-connected objectives:

First the ELIG ‘Learning@Work’ Lab aims at furthering our knowledge on the applicability, feasibility and scalability of new forms of workplace learning. From this perspective the Lab aims at identifying a range of innovative TEL practices and to analyze their respective value proposition, innovativeness, and why such practices can be considered to be a success. As such the ELIG Lab acknowledges that there can be a difficulty on measuring ‘success’ and that such measures might greatly vary depending on how success defined. Do we use pedagogical, technological, socio-economic, business-economic, or other criteria to determine what can be considered as being a success?

The second objective of the ELIG ‘Learning@Work’ Lab is directly concerned with the principle question on how existing TEL innovation can help us to teach how to innovate in TEL. Innovation, particularly in the field of TEL, may take very different forms than the ‘classic innovation paradigm’ that moves from research through prototypes to massive commercial exploitation. So how can we effectively support a diversity of innovation paths, along with innovation channels, starting points, or contexts? From this perspective the Lab aims at exploring potential innovation support models that could be applied to a variety of modes and contexts; and in which innovation may emerge and have different, adaptable ways to support it.

From Innovative TEL practices to supporting innovation in TEL

The ELIG ‘Learning@Work’ Lab aims to uncover Innovative TEL practices and in particular those ones that relate to fields that appear to currently gain in importance, such as:

- Learning embedded in work
- Mobilizing creativity and entrepreneurship
- New technologies, methods and tools
- Open learning culture
- Mobilizing collective intelligence
- Creating the new learning organization
- Creating an adaptive learning system

The ELIG ‘Learning@Work’ Lab aims to engage with Innovators in TEL and those that have a vast interest and experience on supporting innovation in TEL. We want to gather creative minds, thinkers, tinkers, and leaders in the field to generate ideas and uncover solutions to support TEL innovation and to teach how to innovate in TEL.

The Innovative TEL practices thus aim to support the exploration of potential innovation support models that could be applied to a variety of modes and contexts; and in which innovation may emerge and have different, adaptable ways to support it.

Means to engage at the ‘Learning@Work’ Lab

The ELIG ‘Learning@Work’ is open to all ELIG members and more generally to anyone interested in Innovation in TEL. The ELIG ‘Learning@Work’ Lab features a series of physical workshops and virtual sessions. For those interested to participate please visit the ELIG Website to learn more about forthcoming events and actions!



About ELIG

ELIG is an open group defined by a shared vision – to change the way Europe learns – with members representing the European learning and educational publishing, technology and service industry as well as leading public and private education and learning institutions. As a network of European learning innovators ELIG catalyzes ideas and actions in a wide network of learning and education stakeholders while leveraging the strong industry base and ICT expertise of our members. ELIG is highly committed with workplace learning for large enterprises and SMEs alike.

ELIG “Learning@Work” Key Dates

September 2013: Open Call on “Learning for Innovation”!

The Open Call aims to uncover Innovative ‘Learning@Work’ TEL practices. Out of all received practices up to 3 innovators will have the chance of being invited to the pre-conference workshop at the Global Peter Drucker Forum in Vienna in November 2013; with another up to 10 innovators having the chance of showcasing their innovations in detail via the ELIG virtual network.

26 & 27 September 2013: Launch of the ‘Learning@Work’ Lab at ELIG Annual General Meeting

Launch of the ELIG ‘Learning@Work’ Lab at the ELIG Annual General Meeting “Europe missing the boat again? How to rise up the opportunity of the new digital Learning Revolution”. This Lab launching session will pay particular attention to one of the Annual General Meeting focus areas: “Creative Learning & Entrepreneurship”. The launching session is organized in cooperation with the Drucker Society and will reflect on a number of innovative TEL practices from the ELIG network and on how existing TEL innovation can help us to teach how to innovate in TEL.

13 November 2013: Learning for Innovation Workshop

The ELIG ‘Learning@Work’ Lab will run a special pre-conference workshop to the Drucker Forum Vienna - featuring Don Tapscott and Venkat Ramaswamy. The objective of the workshop is to bring together creative minds, thinkers, tinkers, and leaders to generate ideas and uncover solutions to support TEL innovation and to teach how to innovate in TEL. Out of all received practices from the September 2013 Call for Innovators up to 3 innovators will have the chance of being invited to this pre-conference workshop!

4-6 December 2013: ELIG ‘Learning@Work’ Lab at Online Educa Berlin

Presentation of initial findings and draft of a Manifesto on “Learning for Innovation – how to teach to innovate” at the Online Educa Berlin.

January to July 2014

From January to July the ELIG ‘Learning@Work’ Lab is going to organize a number of virtual and physical events that aim to refine the “Learning for Innovation – how to teach to innovate” Manifesto based upon the received TEL innovation practices and the initial findings from the 2013 ELIG ‘Learning@Work’ physical events.

For those interested to participate please visit the ELIG Website to learn more about forthcoming events and actions! www.elig.org





For more information about the HoTEL project please visit the project website: <http://hotel-project.eu>

or contact Stefania Aceto (Stefania.aceto@menon.org)

For Lab specific question please contact the Lab leader:

UNIR Higher Education Lab, Prof. Dr. Daniel Burgos (research-mgt@unir.net)

EFQUEL Informal learning and professional networks, Prof. Dr. Ulf-Daniel Ehlers (info@efquel.org)

ELIG Learning@Work Lab, Dr. Andreas Meiszner (contact@elig.org)

Keep in touch! Join our TEL Innovation Laboratory **Linkedin** group!
